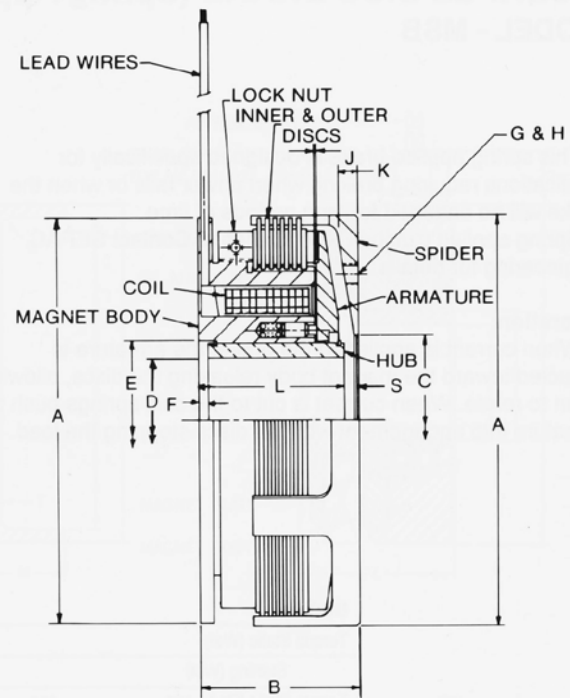
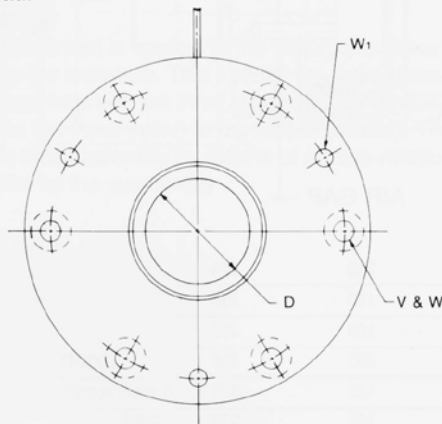


ELECTROMAGNETIC MULTIPLE DISC BRAKE MODEL - MDB

This SEPAc multiple disc brake is designed to operate both dry and in oil. The magnet body is secured to a wall or can be shaft mounted with a torque arm.

Operation:

When current is applied to the coil in the magnet body, a magnetic field is created which attracts the armature toward the magnet body face. This causes the outer discs to be squeezed between the inner discs and the drag created stops the load.



MODEL	MDB	395	435	475	520	580	640	720	795	925
Torque Static (Wet)	LB-FT	12	23	46	75	117	187	300	505	795
Starting (Wet)	LB-FT	7	12	25	42	65	107	168	281	449
Torque Static (Dry)	LB-FT	13	25	52	84	130	208	332	561	882
Starting (Dry)	LB-FT	10	19	39	63	98	161	253	421	673
Max Speed	RPM	4200	4000	3500	3200	3000	2500	2200	2000	1750
Spider Diameter	A	3.93	4.33	4.72	5.19	5.78	6.37	7.16	7.95	9.25
Overall Length	B	1.77	1.88	2.04	2.16	2.28	2.44	2.67	2.99	3.38
Spider Bore (min.)	C	1.500	1.750	2.000	2.125	3.375	2.750	2.875	3.375	4.000
(max.)	C	2.750	2.950	3.340	3.540	4.130	4.520	5.310	5.900	6.880
Bushing Bore	D	.906	1.156	1.281	1.469	1.719	1.906	2.219	2.513	2.906
Pilot Diameter	E	1.375	1.625	1.875	2.000	2.250	2.625	2.875	3.250	3.625
Pilot Depth	F	.156	.156	.156	.156	.156	.187	.187	.187	.187
Spider Mtg. Circle	G*	3.22	3.54	3.93	4.13	4.80	5.31	6.10	6.69	7.87
Spider Th'd Mtg. Holes	H*	(4) 1/4-20	(4) 1/4-20	(6) 1/4-20	(6) 5/16-18	(6) 5/16-18	(6) 5/16-18	(6) 3/8-16	(6) 3/8-16	(6) 1/2-13
Spider Dowel Holes	H*	(2) 1/4	(2) 1/4	(3) 1/4	(3) 1/4	(3) 5/16	(3) 5/16	(3) 3/8	(3) 3/8	(3) 1/2
Air Gap	J	.011	.011	.011	.013	.015	.015	.017	.019	.023
Spider Face Depth	K	.196	.196	.236	.275	.275	.275	.315	.354	.396
Bore Length	L	1.65	1.77	1.88	1.96	2.08	2.24	2.48	2.75	3.14
Spider Face/Bushing Face	S	.118	.118	.157	.196	.196	.196	.196	.236	.236
Magnet Body Bolt Circle	V	3.125	3.531	3.875	4.187	4.875	5.375	6.125	6.906	8.000
Magnet Body Mtg. Holes	W	(4) 1/4-20	(4) 1/4-20	(6) 1/4-20	(6) 5/16-18	(6) 5/16-18	(6) 5/16-18	(6) 3/8-16	(6) 3/8-16	(6) 7/16-14
Magnet Body Dowel Holes	W1	(2) 1/4	(2) 1/4	(3) 1/4	(3) 1/4	(3) 5/16	(3) 5/16	(3) 3/8	(3) 3/8	(3) 1/2
Coil Data 24 VDC	AMPS	.88	1.07	1.40	1.60	1.80	1.93	2.71	3.50	4.33
110VDC	AMPS	.25	.31	.36	.46	.47	.50	.62	.76	.95
Weight	LBS	4.4	5.7	7.0	8.8	12.0	17.0	24	33	46
Thermal Capacity	BTU/min.	10.8	13.3	15.8	18.3	22.5	28.3	36.7	50.0	70.0

* Recommended bolt pattern, others optional